

Sink waste kit 1½"

Two overflows

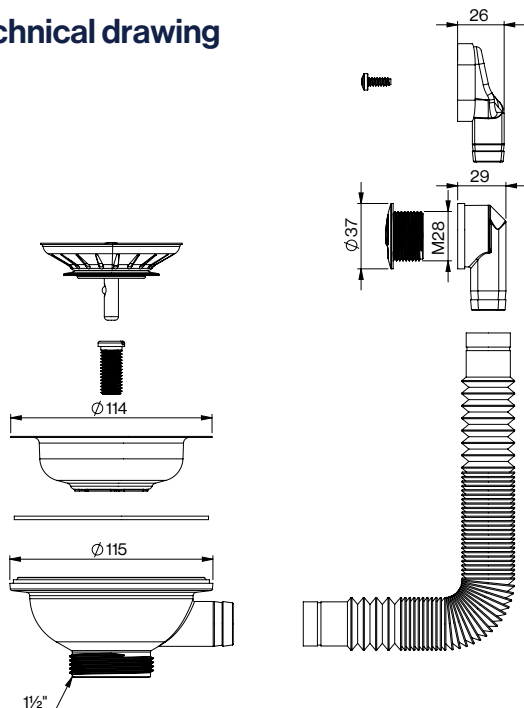
Waste valve 114 strainer with overflow, both round and square configurations, featuring an innovative excenter design for efficient waste management.



Technical data

Category	Kitchen, sink
Material	Recycled plastic
Type	Overflow
Thread	1½"
Colour	White/Grey
Weight	300 g
Water flow	EN 274
EN Standards	EN 274

Technical drawing



All our products meet the European EN-274 standard.

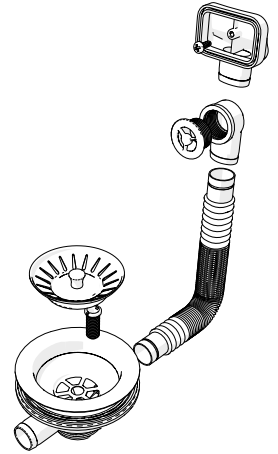


Developed and produced in Finland.

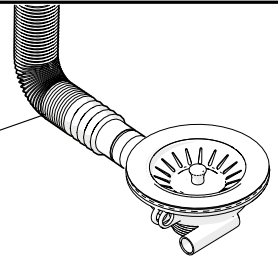
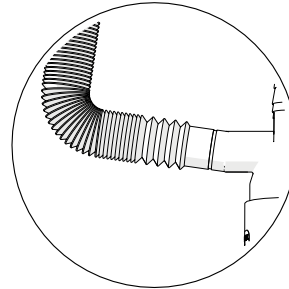
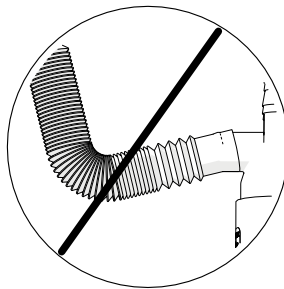
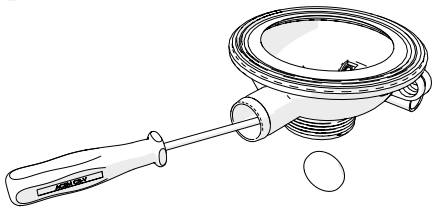
PREVEX
ALL ABOUT WATER TRAPS

PREVEX Waste kit

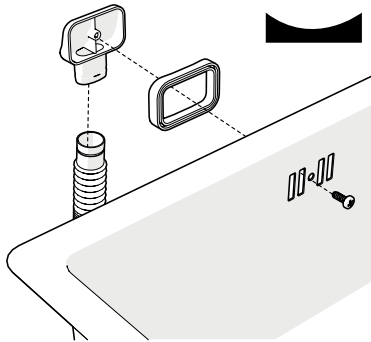
EN 274 



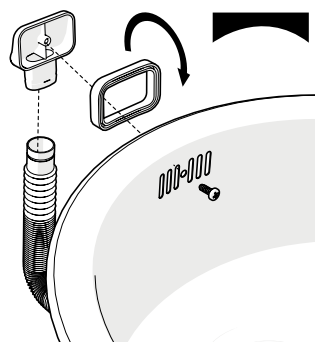
1.



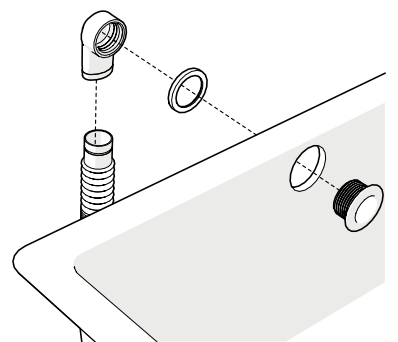
A



B

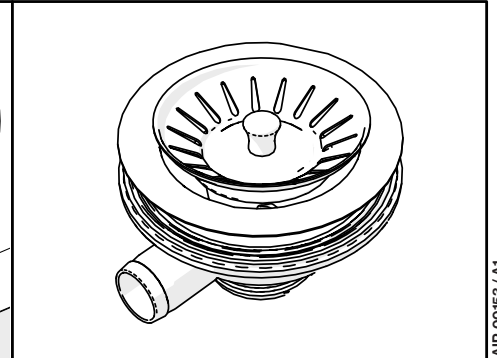
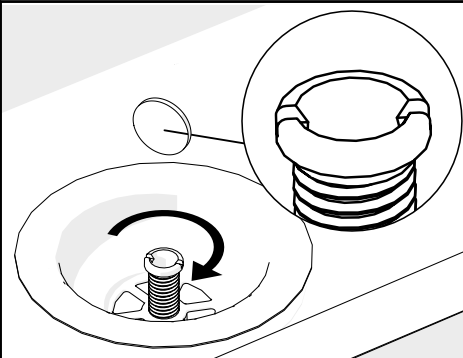
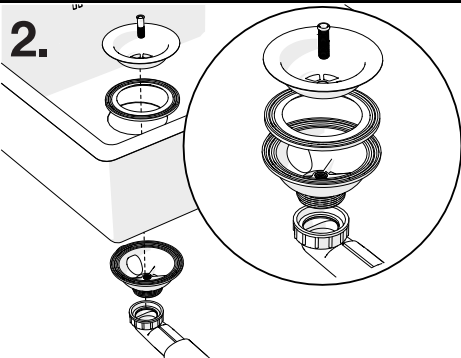


C



AIP-00233 / A1

2.



AIP-00153 / A1