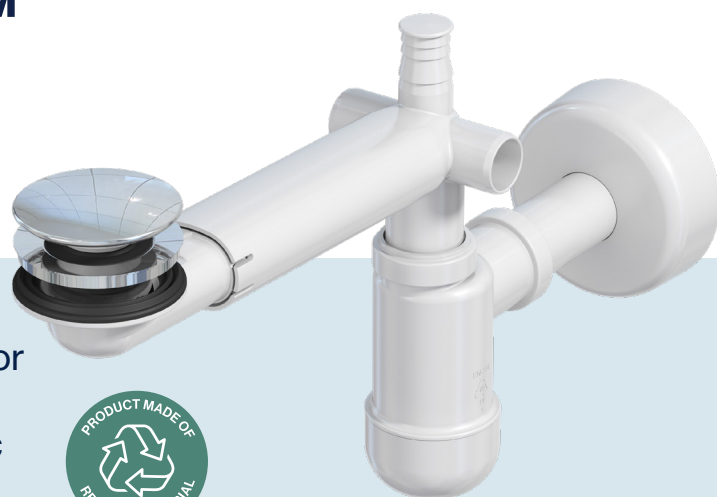


# Prevex® Preloc™

MultiValve – space saving,  
chrome pop-up, wall mount

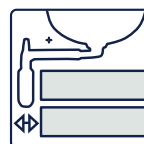
Preloc SpaceSaver is a flexible and easy-to-install water trap with MultiValve for bathrooms. These water traps, equipped with both horizontal and vertical telescopic features, are extremely space saving as they can be mounted into the back wall.



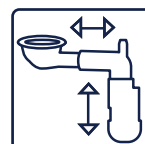
## Technical data

Category	Bathroom, sink
Material	Recycled plastic
Type	Bottle trap
Outlet	Ø 32
Colour	White
Weight	367 g
Water flow	EN 274
EN Standards	EN 274

## Features



Compact

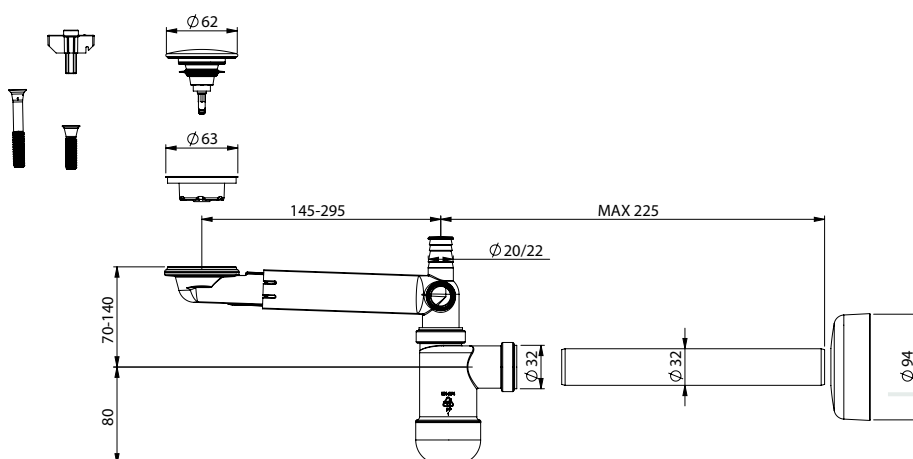


Adjustable



Easy to install

## Technical drawing

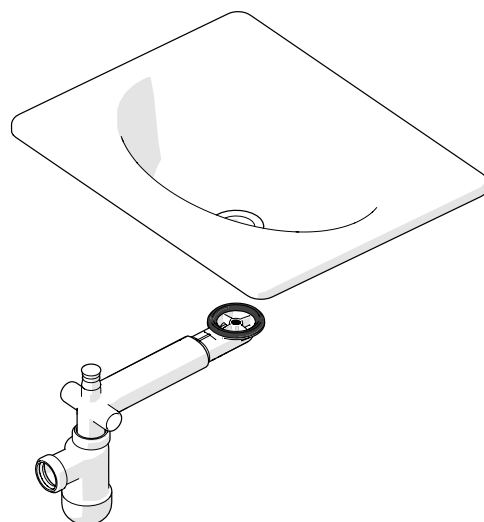


All our products meet the European EN-274 standard.

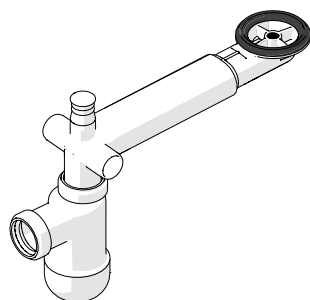
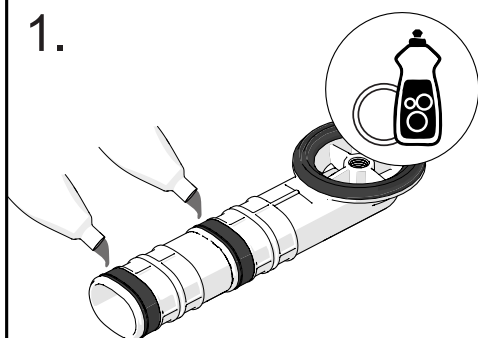
 Developed and produced in Finland.

**PREVEX**  
ALL ABOUT WATER TRAPS

# Preloc MultiValve



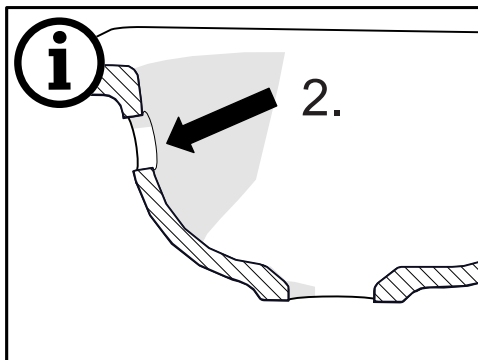
1.



AIP-00255 / A1

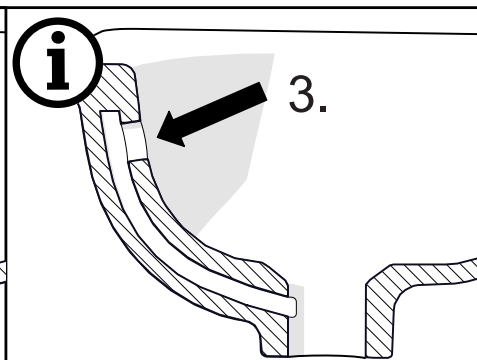
**i**

2.



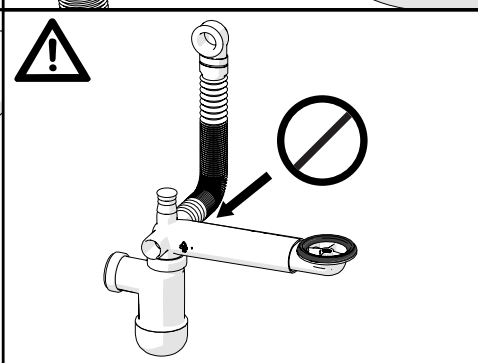
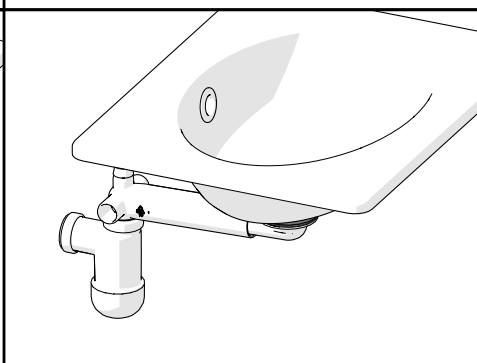
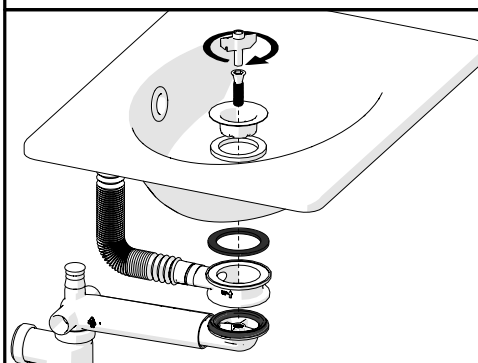
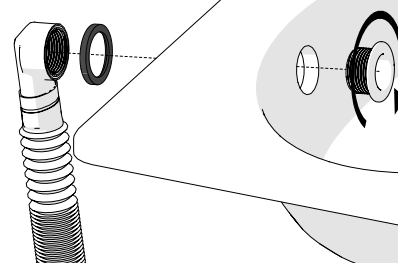
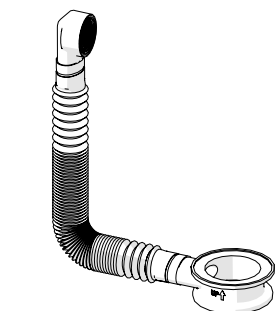
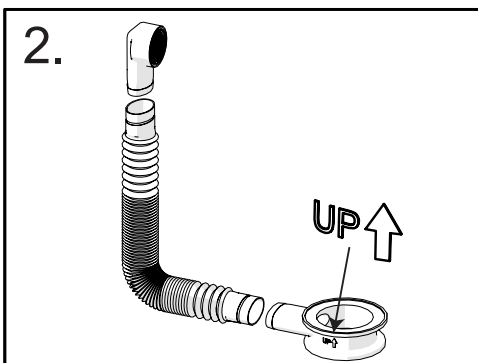
**i**

3.

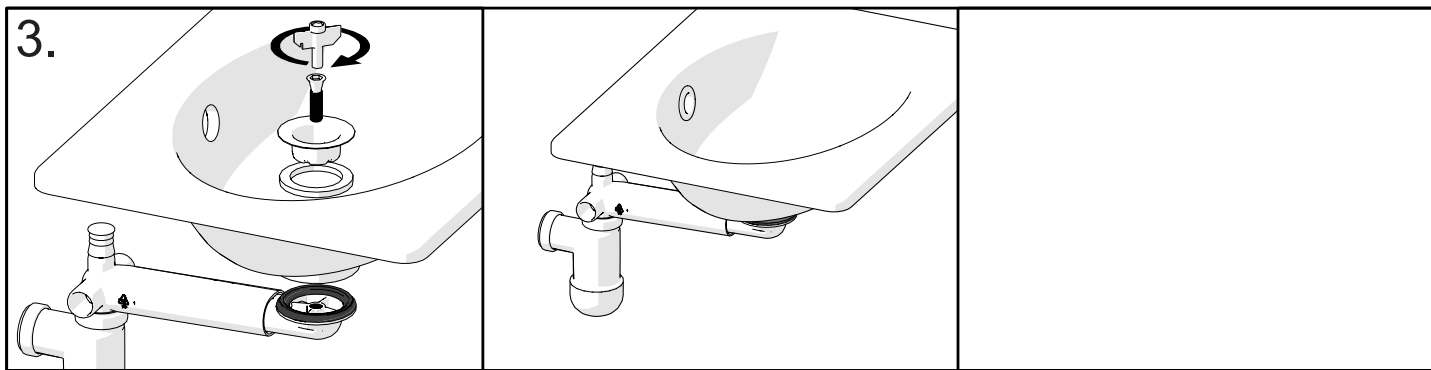


AIP-00263 / A1

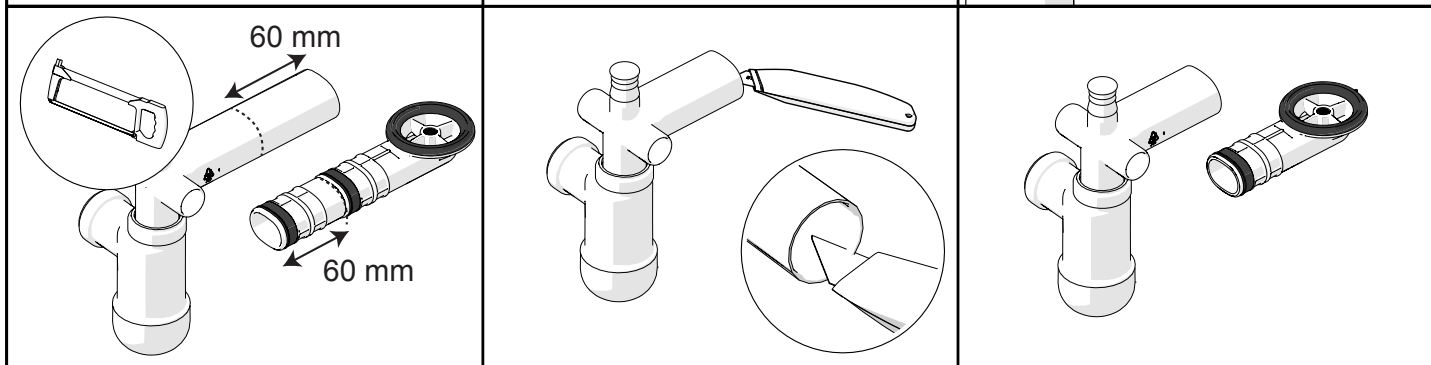
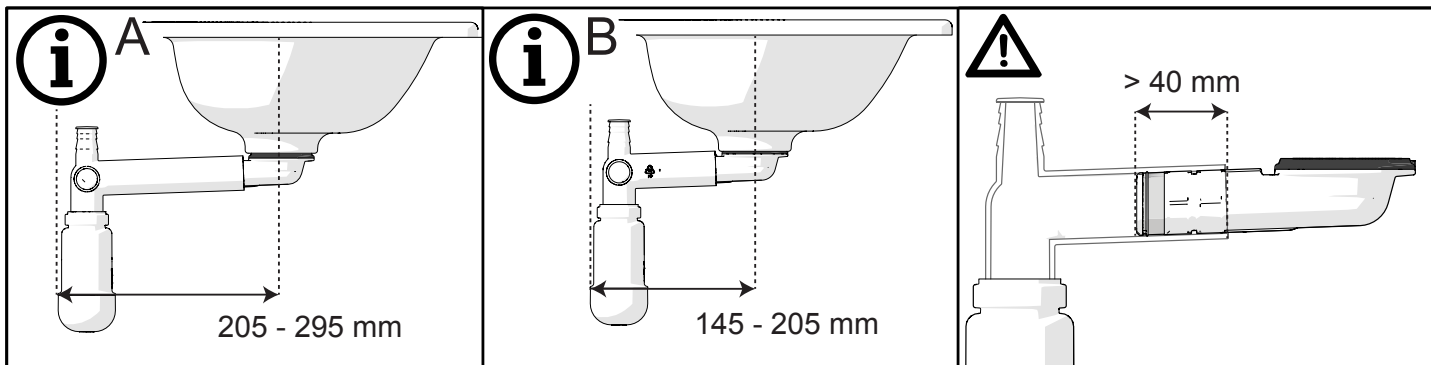
2.



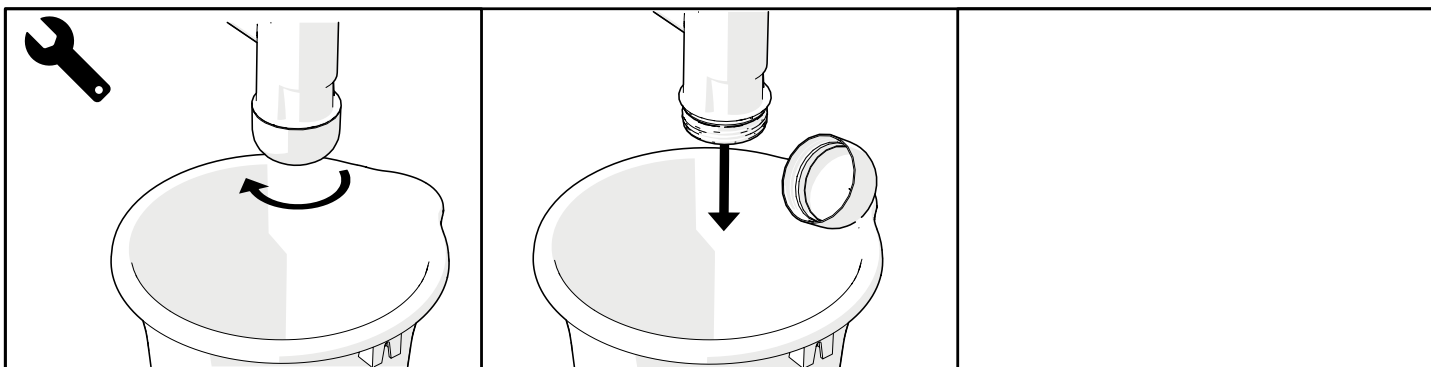
AIP-00264 / A1



AIP-00285 / A1



AIP-00257 / A1



AIP-00023 / A1